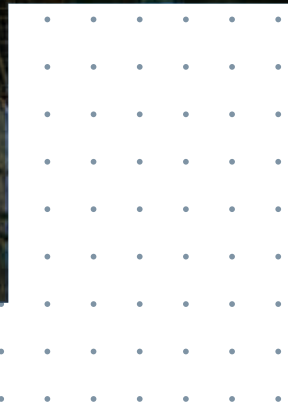
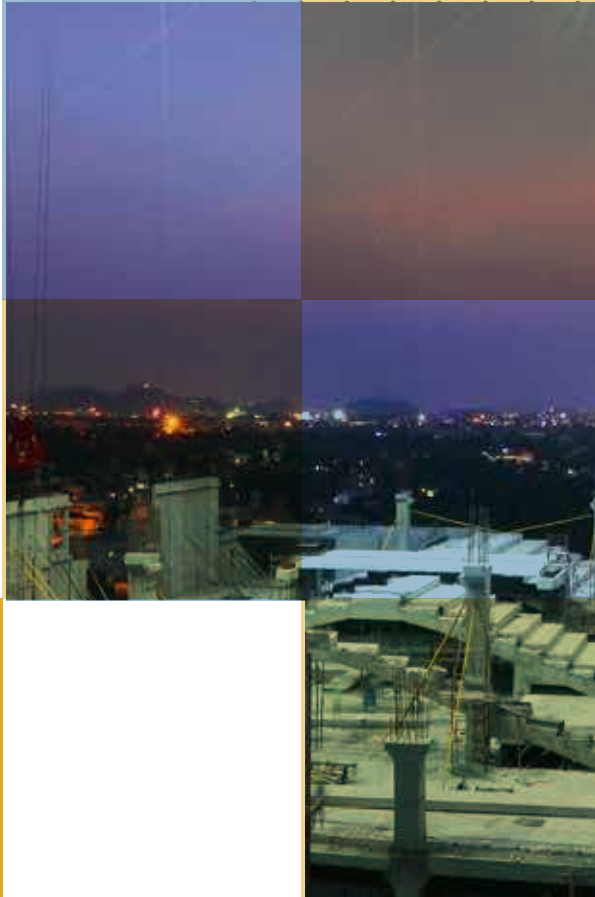




instaa

— TRUST THE CAST —



Plot no A6/1, SIPCOT INDUSTRIAL PARK, Phase II, Kunnavakkam Village,
Cheyyar Taluk, Tiruvannamalai district, Tamil Nadu - 631701.

About **instaa**

Instaa Precast is India's leading Supplier of high quality and innovative, customizable precast concrete product solutions and industry leading Installation and construction services that expertly meets the needs of a fast growing building and construction industry.

Operating from a dedicated plant located in Chennai, using state of the art technology, production techniques and systems. Instaa Precast produces a diversified range of wall, floor, column and client specific precast solutions. We take pride in our ability to exceed the expectations of our customers and find solutions that meet their needs.

We service a range of markets and focus on industrial, commercial and multi residential sectors.

WHY TO USE PRECAST

FOR AN AESTHETIC SOLUTION WITH MULTIPLE BENEFITS, THE ANSWER IS PRECAST CONCRETE

Easy and Quick Installation

The most widely recognized reason to use precast is the reduction in construction time that can be achieved.



This is possible because precast is manufacture off site and made to client specification so that manufacture and site preparation can occur simultaneously with quick and straightforward installation, ensuring faster completion of the structure, minimal delay to work being carried out by other trades and limited site congestion. In addition, precast does not suffer from delays due to exterior weather conditions which can occur with other substitutes.

Precast Advantages

Minimal Disruption Onsite

Since the precast elements are manufactured offsite and simply lifted and fixed into position (usually in a day or two) precast panels cause minimal delays enabling to bring forward project completion dates.

Durability

Made from concrete in various densities and compositions precast concrete is a strong, low maintenance material that will endure the ravages of weather, time, pollution and other external forces with minimal degradation or damage.

Fire Resistance

The precast products are absolutely fire resistant and easily meets various government norms for fire prevention and control.

Quality Controlled

All Instaa Precast products are manufactured to meet and exceed the stringent quality expectations of the client.

At Instaa Precast we see the quality of our product as a reflection on the quality of our business, so each panel is manufactured and designed to reach the highest standards every time.

Sound Insulation

Due to its density and mass, concrete is an excellent barrier against various external noises such as traffic, aircraft and weather events.

Thermal Insulation

Due to their thermal mass, precast concrete panels slow the flow of temperature fluctuations by storing and releasing these gradually, resulting in more comfortable living conditions for occupants.

Easy Customisation

Concrete's plasticity and malleability makes it easy to form into a range of shapes, sizes and finishes designed to meet individual requirements. The precast products are distinctive because they are manufactured only after gathering intimate knowledge of the project and client and designed to meet the client's need exactly.



Precast Product Line-up

Hollow Core Slabs

The standard Hollow core slab from Instaa Precast, combines the compressive strength of concrete with the high tensile strength of steel strand.

Featuring advantages such as longer spans and excellent load bearing capacity, resulting in unprecedented architectural freedom during construction.

The HCS are usually 1.2 meters wide and 120 meters long and the Instaa factory has the capacity to produce 10000 sq.ft per day of HCS in various sizes and in varied thickness.



Columns & Beams

Pre-stressed RCC supporting precast column and beam are advantageous for fast constructions as no propping of beams are required.

There is no need for expensive on-site formwork and flexibility with design is also possible. The advantage of a composite beam structure is that it permits less structural depth for a given load-bearing capacity.

Precast beams and columns are manufactured in a variety of sizes, shapes and lengths. The concrete surface is smooth and the edges are chamfered.

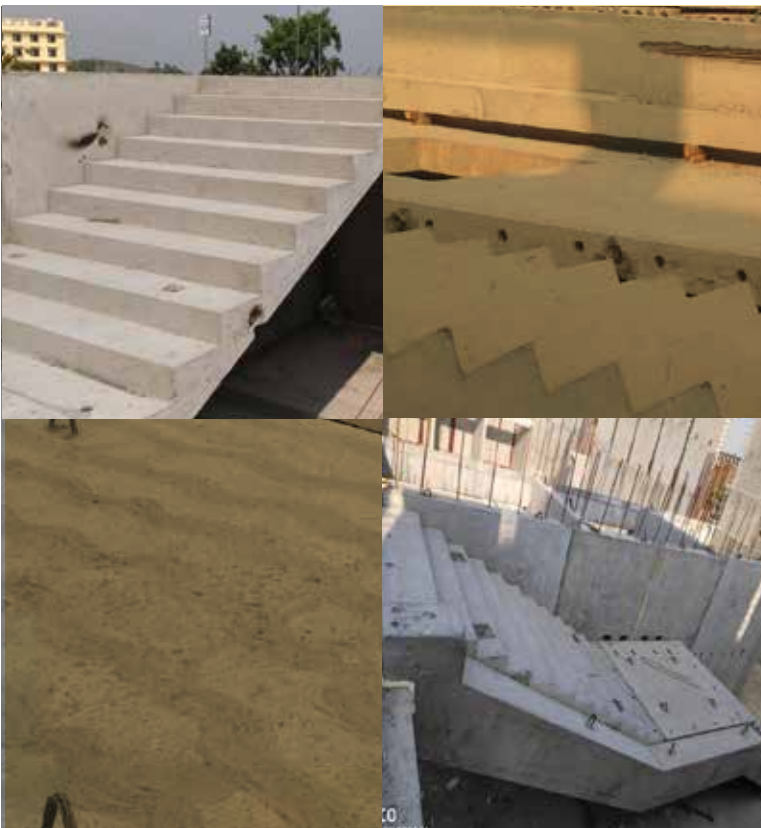
Precast Product Line-up

Wall Panels

Instaa Precast offers a wide variety of Precast panels for external wall, internal walls and boundary walls.

Sandwich wall panels consist of two concrete layers with an insulation layer in between. The external layer is generally in architectural concrete. The internal layer is in gray concrete and may be designed as load-bearing or non-load bearing element.

Types of wall panels available include external wall panel, load bearing and non-load bearing (with sandwich panel).



Stairs & Landings

Precast stairs and landings have lasting strength and durability.

A range of configurations are available for the stair units and landings to meet individual needs. They are easy to install and adds to the aesthetics of the building.

The customized stairs and landings is factory produced to high quality standards.

UG tank

A UG tank is an underground tank that is used for a variety of purposes, including storing water or other liquids, holding fuel for a generator, or providing a safe place to store hazardous materials.

Instaa Precast UG Tanks come in a variety of sizes and shapes, making it easy to select a tank that fits your specific needs. Instaa Precast UG Tanks are a great choice for anyone looking for an efficient, economical water storage solution. With their durable construction, easy installation, and corrosion-resistant design, our UG Tanks are highly recommendable.



U Drain

U Drain is a revolutionary new drainage system designed to minimize runoff and reduce flooding in urban areas. The system consists of a central underground drainage system, connected to a series of pipes and catch basins. The system is designed to store and direct storm water away from buildings and other structures, preventing flooding and other related damage.

Instaa Precast U Drain is easy to install, requiring minimal disruption to existing infrastructure. It is designed to be both cost effective and environmental friendly.

Boundary Wall

Instaa Precast boundary walls offer a cost-effective, durable, and aesthetically pleasing way to enclose a property. They are constructed off-site using reinforced concrete and are designed to be durable and long-lasting.

Instaa Precast Boundary walls are available in a variety of sizes, shapes, and colours and can be customized to meet the specific needs of any project.





Zoho MLCP



Zoho Hospital



S3 Mall





TVS Oragadam



Sai University



ELA School



Our Services

Estimation Service

Offering estimating services to find a solution that not only suits your project but also fits within your budget.

Detailing

Giving comprehensive design advice to help you bring your creation to life, while giving advice on how to design panels to achieve economy and easy installation.

Manufacturing

State-of-the-art production at a dedicated factory in Chennai, where experienced engineers and technicians control the manufacturing process. Ensuring the use of quality raw materials and continuous checks on finished products for quality standards while making time bound delivery.

Erection

Experts at putting the pieces of the project together through our erection teams, who are experts in their field.

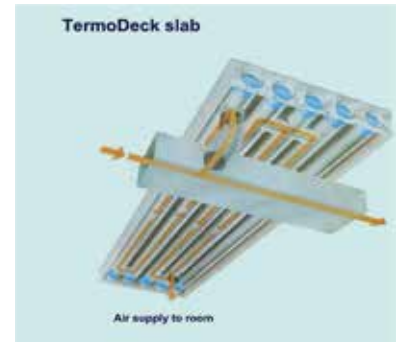
Post Erection

The post erection services include grouting, caulking, welding, patching and brace removal. Post erection team also will engage in finishing touches.

Innovative Products

Energy Efficient Hollow Slabs

Energy-efficient Thermodeck hollow core slabs have been designed to provide thermal insulation and reduce energy consumption in your buildings. It provides radiant cooling using the Hollow core slabs and reduces energy to cool the building by 30% to 40%. This also promotes passive cooling by incorporating ventilation channels into the slab, which helps to regulate the temperature of the building and reduces the need for air conditioning.

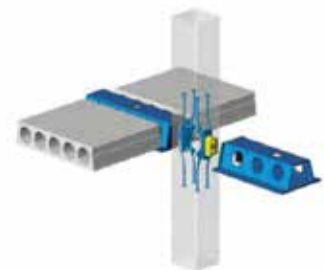


Overall, energy-efficient Thermodeck hollow core slabs can effectively improve buildings' energy efficiency, reduce energy costs, and promote sustainability. The small improvements in energy efficiency can lead to significant cost savings over time.



Slim Floor System

PEIKKO Delta Beam is a revolutionary structural support system designed to provide a secure and efficient solution for frameless construction. IPI is partnered with Peikko to do slim floors. With this technology within the given height in tall buildings, additional floors can be built without compromising on the floor-to-floor height thereby increasing the efficiency of space utilization.

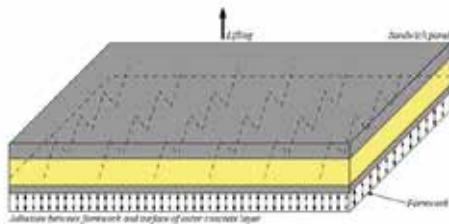


The Slim floor system is a versatile and innovative solution that provides numerous benefits for construction projects. It can help to improve structural efficiency, installation efficiency, design flexibility, fire safety, and sustainable design. It allows for larger spans, which maximizes the usable space and provides more flexibility in building design.



Ties and Connector Pins

Sandwich wall panels consist of two concrete layers with an insulation layer in between. The external layer is generally in architectural concrete. The internal layer is in gray concrete and may be designed as load-bearing or non-load bearing element. Types of wall panels available include external wall panel, load bearing and non-load bearing (with sandwich panel).



Wall panels (EXTERNAL, INTERNAL, SANDWICH WALL PANELS) can be customized to clients specification to achieve best building design. Energy Saving - Sandwich Panels with insulation, the air-conditioning requirement of a building can be brought down by 30%. Panels with façades to enhance the aesthetics can be done.



Architectural Concrete Surfaces

"Reckli is a leading provider of reusable elastic formliners for architectural concrete surfaces. Their high-quality formliners are available in a wide range of patterns and textures, including geometric shapes, natural patterns, and lettering. Reckli's products can be used for both precast and cast-in-place concrete applications, providing a cost-effective and environmentally friendly solution for creating unique and attractive concrete surfaces.



If you are looking for a unique texture or just want a durable and aesthetically pleasing finish, then Instaa Precast Reckli has the perfect solution for your project. With their wide selection of products, you are sure to find something that meets your specific needs.

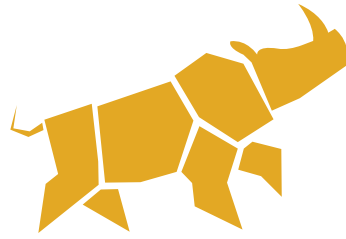




Photographic patterns on concrete surfaces

Architectural concrete is a versatile and durable building material that can be used to enhance the visual appeal of a structure. Graphic Concrete is a Finnish company that offers patented technology for creating photographic patterns on concrete surfaces. With this technology, patterns, images, or designs can be created on the surface of the concrete to add a unique and visually appealing element to any project. This technology utilizes a membrane to imprint a design onto the surface of the concrete, resulting in a long-lasting and durable finish. Not only does Graphic Concrete offer a sustainable solution for building design, but it can also enhance the overall aesthetics of a structure.





instaa
— TRUST THE CAST —

Contact Us

INSTAA PRECAST INDIA (OPC) PVT LTD
Plot no A6/1, SIPCOT INDUSTRIAL PARK,
Phase II, Kunnavakkam village,
Cheyyar Taluk, Tiruvannamalai district,
Tamil Nadu - 631701.

Phone : +91 96000 92626

E-Mail : sales@instaaprecast.com